



# MONTHLY MEMBERSHIP PROGRESS REPORT

District 303

Results as of: 06/30/2018

GMT: TERESA MANN

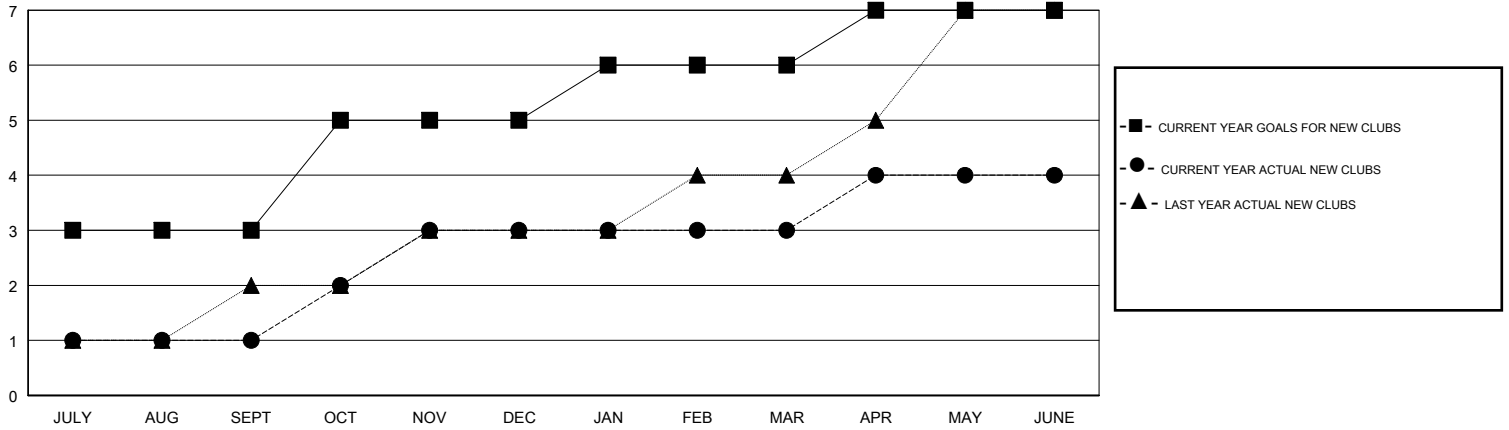
LOCATION HONG KONG, CHINA

GMT CA

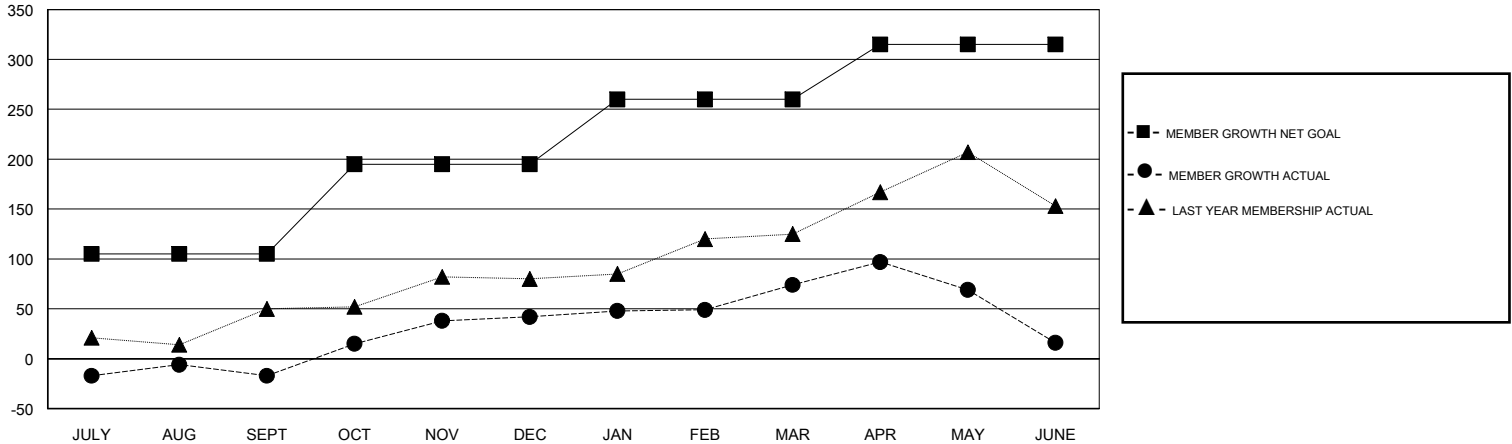
Clubs			
RESULTS FOR 2017-2018			
QUARTER	NEW CLUB GOAL	NEW CLUBS	DROPPED CLUBS
JULY/AUG/SEPT	3	1	0
OCT/NOV/DEC	2	2	0
JAN/FEB/MAR	1	0	0
APR/MAY/JUNE	1	1	0

Members			
RESULTS FOR 2017-2018			
QUARTER	MEMBER GROWTH NET GOAL	MEMBER GROWTH ACTUAL	DROPPED MEMBERS ACTUAL (including transfers)
JULY/AUG/SEPT	105	175	185
OCT/NOV/DEC	90	90	28
JAN/FEB/MAR	65	68	36
APR/MAY/JUNE	55	161	215

GOALS AND ACTUAL NEW CLUBS CUMULATIVE



GOALS AND ACTUAL MEMBERS CUMULATIVE



DROPPED CLUBS: 0	77 CLUBS OF 90 ADDED 1 OR MORE NEW MEMBERS	<u>GENDER DISTRIBUTION</u>	
DROPPED MEMBERS		MALE	1,573 (72.12%)
DECEASED	10	FEMALE	608 (27.88%)
CLUB CANCELLED	0	Women Percentage Fiscal Year Goal: 28%	
OTHER	454	<a href="#">CLICK HERE FOR CUMULATIVE MEMBERSHIP DATA</a>	
TOTAL	464	TOTAL FAMILY UNIT MEMBERS	0
		FAMILY MEMBERS PAYING HALF DUES	0